



Table of Contents

Introduction 1 ▶

Community Served by the Northwestern Medicine Hospitals in McHenry County 6 ▶

Community Health Implementation Plan Overview 10 ▶

Significant Health Needs 12 ▶

Priority Health Needs 14 ▶

Implementation Plan 16 ▶

Implementation Plan Adoption 24 ▶

Your Feedback Makes Us Better

We welcome your comments, ideas and questions about this report, and all Community Health Needs Assessment and Community Health Implementation Plan documents at Northwestern Medicine.

Please share your feedback by calling the Northwestern Medicine Community Affairs Department at 312.926.2301 (TTY: 711) or by emailing communityhealth@nm.org.

Please include your name, organization (if applicable), and any questions or feedback you have about the report content.

Public availability

This report and all Northwestern Medicine Community Health Needs Assessment and Community Health Implementation Plan documents are public information. You can access them at nm.org/about-us/nm-community-impact/reports.

You can also request reports at no cost by calling the Northwestern Medicine Community Affairs Department at 312.926.2301 (TTY: 711) or by emailing communityhealth@nm.org.



Introduction

Northwestern Medicine is committed to:

- Delivering World-Class Care and Experience Regardless of the Patient's Ability to Pay
- Deepening Our Relationships With Our Community to Improve Health Equity
- Advancing Discovery and Medical Knowledge

We are a nonprofit, integrated academic health system committed to serving a broad community. We provide world-class care at 11 hospitals, two medical groups, and more than 200 diagnostic and ambulatory locations in communities throughout Chicago and the surrounding suburbs.

Our hospitals are pillars in their respective communities and lead efforts to positively impact the health of the populations they serve. From collaborating with community organizations to serving as a major economic driver, Northwestern Medicine helps make communities stronger.

Northwestern Medicine is a strategic partnership between Northwestern Memorial HealthCare and Northwestern University Feinberg School of Medicine.



11
hospitals



2
medical groups



200+
locations

About the Northwestern Medicine Hospitals in McHenry County

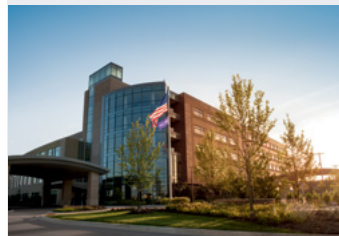
The Northwestern Medicine hospitals in McHenry County include Northwestern Medicine McHenry Hospital, Northwestern Medicine Huntley Hospital and Northwestern Medicine Woodstock Hospital.



Northwestern Medicine McHenry Hospital

Located at 4201 Medical Center Drive in McHenry, Illinois, McHenry Hospital is a nationally recognized 143-bed, acute-care teaching hospital with nearly 800 physicians and 60 specialties. Hospital staff provides comprehensive, leading-edge health care to residents in McHenry and surrounding communities.

The hospital is a regional destination for oncology, neurosurgical and cardiovascular care, and provides emergency services, as well as inpatient and outpatient care. It specializes in cardiovascular interventions and surgical services. The McHenry campus is home to the only open-heart surgery program in McHenry County and offers minimally invasive treatment for patients with diseased heart valves. Northwestern Medicine McHenry Hospital Cancer Center is fully accredited and offers a full range of treatment services, including radiation and an on-site infusion center.



Northwestern Medicine Huntley Hospital

Located at 10400 Haligus Road in Huntley, Illinois, Huntley Hospital opened in 2016 and is an extension of McHenry Hospital. It is a comprehensive medical facility with nearly 800 physicians and 60 specialties. The hospital offers leading-edge health care to residents in Huntley and surrounding communities.

The 128-bed facility provides access to a Level 2 trauma center; surgical services, including a cardiac catheterization laboratory; women's health services, including a 20-bed Family Birth Center; medical-surgical services; and a complement of supporting services. The hospital's Pediatric Unit is staffed by pediatric hospitalists from Ann & Robert H. Lurie Children's Hospital of Chicago. The Huntley campus also features an Immediate Care Center, a fitness center and wellness services designed to enhance the health and well-being of the community.



Northwestern Medicine Woodstock Hospital

Located at 3701 Doty Road in Woodstock, Illinois, Woodstock Hospital is also an extension of McHenry Hospital. Serving the community for more than 100 years, it is a regional destination for behavioral health and outpatient care as well as inpatient rehabilitation.

The 56-bed hospital features inpatient behavioral health services, an Emergency Department, an Inpatient Rehabilitation Department, and a wide range of outpatient services, including laboratory and imaging services.



Community Benefits Plan

Northwestern Memorial HealthCare and the Northwestern Medicine hospitals in McHenry County are guided by a Community Benefits Plan. The Community Benefits Plan includes comprehensive financial assistance and presumptive eligibility policies, as well as vast research, education and other community benefit activities. This Community Health Implementation Plan (CHIP) is aligned and coordinated with the Community Benefits Plan. Together, these strategies help to improve the health of the communities we serve.

About the Community Health Implementation Plan

In alignment with our mission and in accordance with the requirements of the Patient Protection and Affordable Care Act, the Northwestern Medicine hospitals in McHenry County work with community organizations every three years to complete a comprehensive Community Health Needs Assessment (CHNA) that identifies the significant health needs of residents of the community it serves.

This CHIP is a companion document to the Northwestern Medicine Hospitals in McHenry County 2023 CHNA, which can be accessed at nm.org/about-us/nm-community-impact/reports. The goal of the CHIP is to use CHNA data to guide initiatives that improve the health of our community.

In this report, we summarize the significant health needs identified in the 2023 CHNA. We identify which of these needs we will prioritize over the next three years and explain why we will not be addressing other significant health needs identified in the 2023 CHNA.

In addition, for each priority health need, we will explain:

- Actions or strategies planned to address the need
- Anticipated impact of those strategies
- Resources we intend to commit to those strategies
- Planned collaborations between the Northwestern Medicine hospitals in McHenry County and other organizations to address the need

We rely on help from our community

The Northwestern Medicine hospitals in McHenry County value input from local community members and use their insights during development of the CHIP. One way we gather feedback is through our Community Engagement Council.

The Community Engagement Council is a diverse group of representatives from community-based organizations and Northwestern Medicine staff. Council members are people who have expertise in a broad range of areas and have demonstrated a strong, ongoing commitment to improving the health of the communities we serve. Council members were invited to participate based on their role within their respective organizations and their commitment to improving the health of the community.



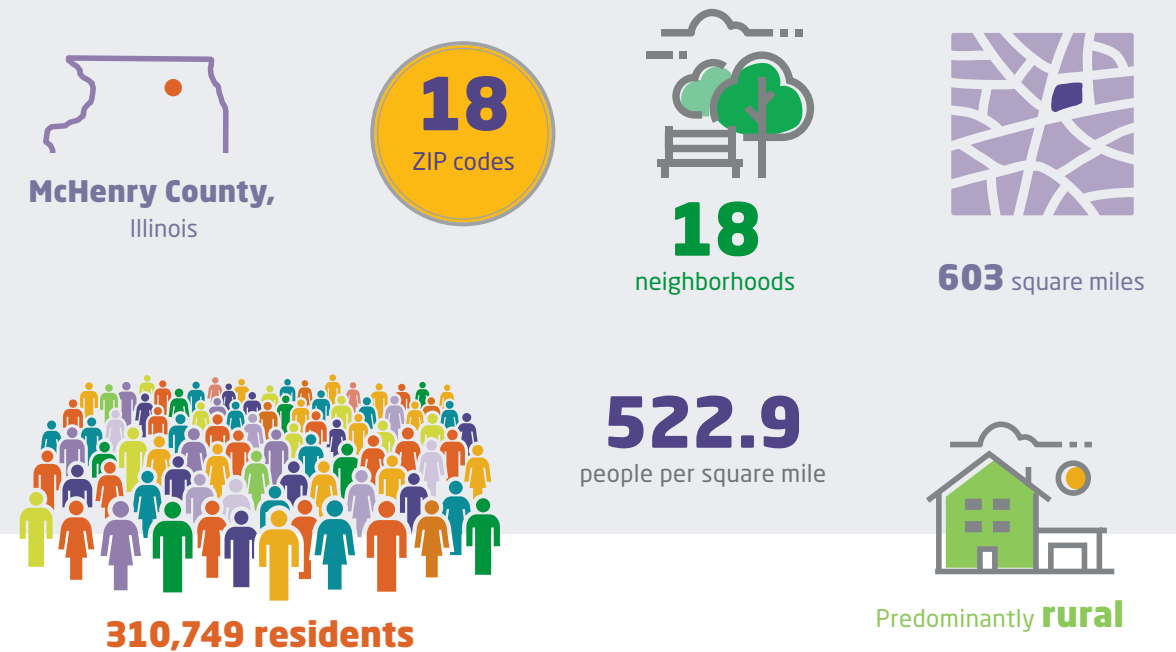


Community Served by the Northwestern Medicine Hospitals in McHenry County

The Northwestern Medicine hospitals in McHenry County Community Service Area (CSA) covers 18 ZIP codes in McHenry County, Illinois.

Northwestern Medicine Hospitals in McHenry County CSA ZIP Codes			
City	ZIP Code	City	ZIP Code
Algonquin	60102	Marengo	60152
Cary	60013	McHenry	60050
Crystal Lake	60014	Prairie Grove	60012
Fox River Grove	60021	Richmond	60071
Harvard	60033	Ringwood	60072
Hebron	60034	Spring Grove	60081
Huntley	60142	Union	60180
Johnsburg	60051	Wonder Lake	60097
Lake in the Hills	60156	Woodstock	60098

How the Community Service Area is defined



The Northwestern Medicine hospitals in McHenry County CSA was determined by:

- Geographic area served by the hospital
- Main functions of the hospital
- Areas that have been historically under-resourced
- Areas where we are currently working on addressing priority health needs, including work with community partners

The defined CSA takes into account populations that are:

- Medically underserved
- Low-income
- Historically under-represented, minority populations

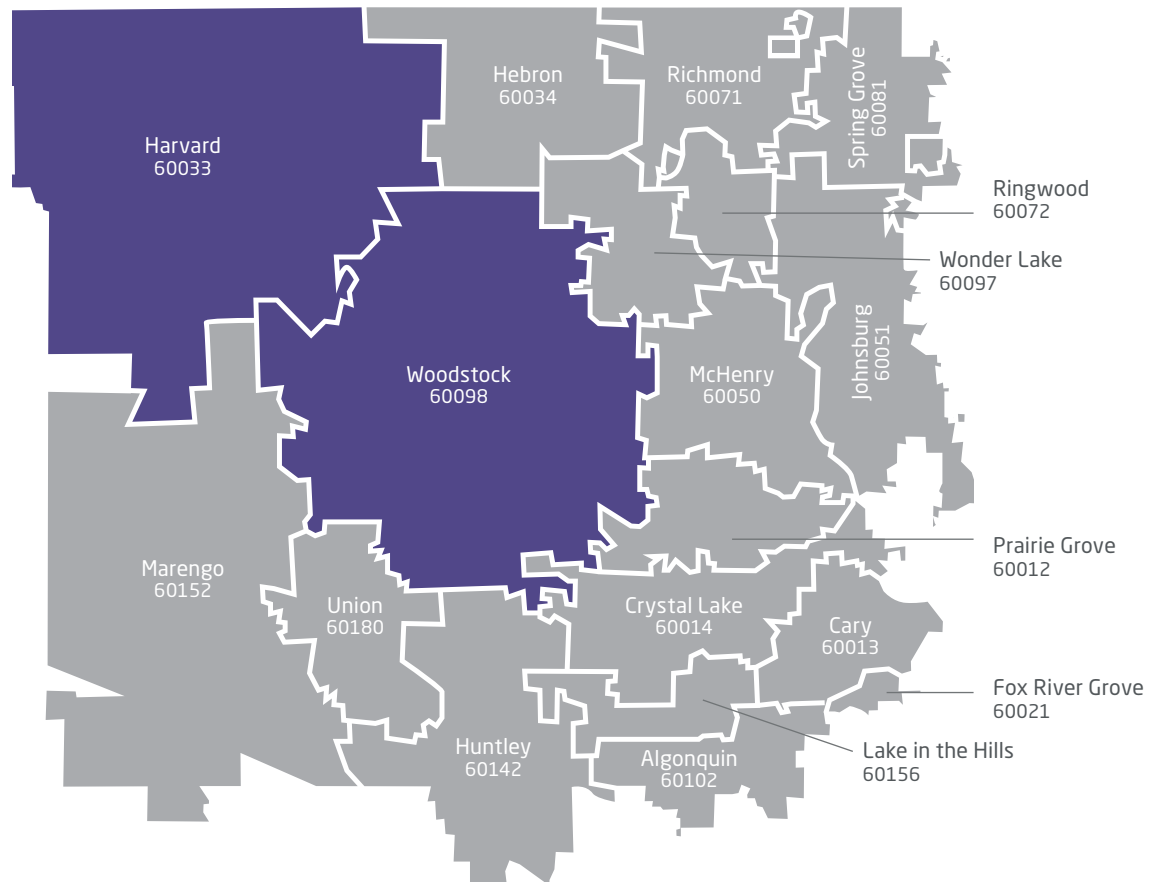
Our CSA definition does not take into account how much patients or their insurers pay for care or whether patients are eligible for financial assistance through Northwestern Medicine.

Identifying communities with economic hardship

Once the CSA has been defined, Northwestern Medicine uses the Socioeconomic Resource Index (SERI) to identify areas experiencing economic hardship. Under-resourced areas are identified based on multiple indicators:

- Unemployment (over age 16)
- Education (over age 25 without a high school diploma)
- Per capita income level
- Crowded housing (more than one person per room)
- Dependents (under age 18 or over age 64)
- Poverty (income below 200% of the federal poverty level)

The strategies identified in this report focus on these under-resourced areas in an effort to address health disparities within the CSA.



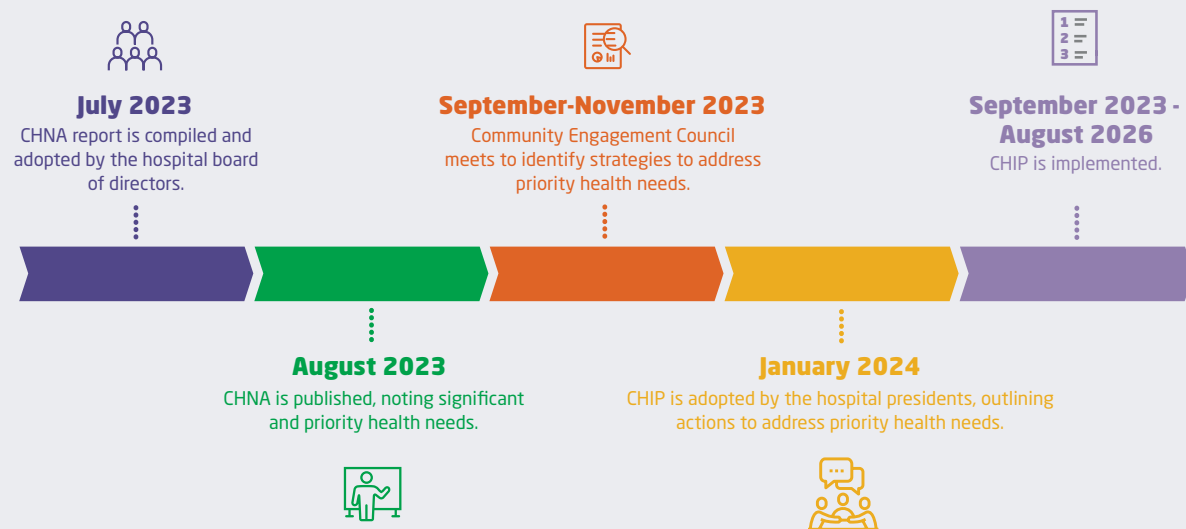
SERI has identified Harvard and Woodstock (dark purple), as well as isolated census tracts in McHenry and Lake in the Hills as under-resourced communities.





Community Health Implementation Plan Overview

CHIP Timeline



CHIP Development Process

CHNA: Identify significant health needs



The Northwestern Medicine hospitals in McHenry County collaborated with Metopio to create the 2023 CHNA. Together, we completed a comprehensive analysis of the collected data. Analysis included getting input from people in targeted under-resourced populations.

Prioritization: Select priority health needs



Once the CHNA data analysis was complete, we convened the Community Engagement Council to help identify the highest priority health needs.

To help us prioritize, council members reviewed guiding principles and CHNA data findings, and participated in robust conversations regarding community health needs for the Northwestern Medicine hospitals in McHenry County CSA.

Strategy development: Identify actions to address priority health needs



Following the prioritization process, we had conversations with community organizations and internal teams to identify potential strategies. We then worked with the Community Engagement Council to identify actions, resources, anticipated impacts and planned collaborations to address selected priority health needs over the next three years. In developing these strategies, we were mindful of our own strengths and those of other organizations in our CSA.

This work is the basis for the CHIP.

Adoption: 3-year plan



This CHIP was adopted in January 2024 by the hospital presidents and will be active until August 31, 2026, in alignment with our fiscal year calendar.

Implementation: Implement strategies to address priority health needs



As we work to address priority health needs over the three-year CHIP span, the report will be reviewed and updated as needed to ensure it remains viable and to maximize our impact. We will regularly share our efforts with reporting agencies and our community.



Significant Health Needs for Northwestern Medicine Hospitals in McHenry County

The following significant health needs were identified through the Northwestern Medicine Hospitals in McHenry County 2023 CHNA. Of these, two were selected as priority health needs.

Among the significant health needs not identified as priority health needs, many are being addressed through the ongoing, comprehensive services and programs at Northwestern Medicine hospitals in McHenry County, in collaboration with our community allies, and across Northwestern Medicine.

Significant Health Needs

Health Need Identified in the 2023 CHNA	Our Response
▶ Access to Care and Community Resources	This need has been identified as a priority health need. See pages 16-19 for our plan to address it.
▶ Behavioral Health	This need has been identified as a priority health need. See pages 20-23 for our plan to address it.
Cancer	This need is addressed through the hospital care delivery system.
Diabetes	This need is addressed through the hospital care delivery system.
Food Access	This need is better addressed by community organizations specializing in this field.
Heart Disease and Stroke	This need is addressed through the hospital care delivery system.
Obesity	This need is addressed through the hospital care delivery system.
Safe, Affordable Housing	To advance equity for those we serve, this need will be incorporated in our work plans.
▶ Substance Use Disorders	This need has been identified as a priority health need within Behavioral Health. See pages 20-23 for our plan to address it.
Transportation	To advance equity for those we serve, this need will be incorporated in our work plans.

▶ Indicates priority health need



Priority Health Needs for Northwestern Medicine Hospitals in McHenry County

The following were identified as the priority health needs to be addressed by the Northwestern Medicine hospitals in McHenry County over the next three years.



Access to Care and Community Resources



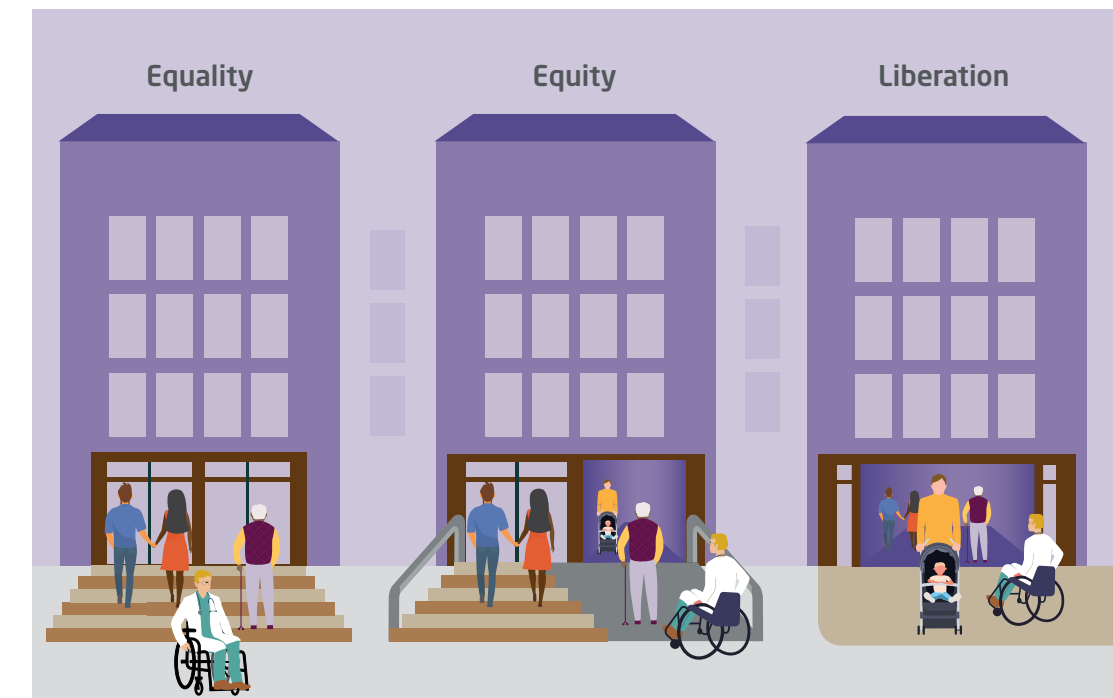
Behavioral Health and Substance Use Disorders

Our commitment to health equity

To achieve equity for those we serve, Northwestern Medicine continually works to:

- Overcome structural inequities and bias
- Improve coordination and connection to community resources
- Provide culturally and linguistically appropriate care

These three areas are integrated in every strategy we have for addressing the priority health needs of our community. These are foundational issues that Northwestern Medicine is addressing both within the organization and across our communities. The long-standing resolve to address them is embedded throughout the work of Northwestern Medicine.



Implementation Plan

Focus group participants highlighted the following needs within Access to Care and Community Resources:



Linguistically accessible and culturally appropriate care



Access to primary health care



Affordable health care and medications

Priority Health Need: Access to Care and Community Resources



Goal: Increase access to comprehensive, high-quality healthcare services within McHenry County.

Access to care and community resources was identified as a priority health need in McHenry County. From survey results to key informant interviews, the need for access continuously emerged in our findings. It was elevated in conversations as a concern that impacts individual health and significantly influences the overall well-being of the community.

Specific themes related to access included provider availability, cost, health education, navigating insurance and the healthcare system, and various social determinants of health such as transportation and housing.

One major concern from focus group participants was that trusted Spanish-speaking medical professionals are needed for health education particularly around vaccination, infectious disease, chronic disease, mental health and maternal health.



50%+

of survey respondents identified access to affordable healthcare providers as the biggest barrier to health in McHenry County.

"A lot of our clients are having to choose between buying food, paying the rent, fixing a car and going to the doctor. If it's not an emergency, they'll skip the doctor, even if it means chronic diseases go unmanaged."

- Focus Group Participant

"When specialists are not available locally, seniors need help to go out of town for care. They may not have anyone available to take a day off to help them get to appointments."

- Focus Group Participant

Action 1: Address Capacity

Evaluate and expand internal capacity through the Northwestern Medicine strategic planning processes.

Anticipated Impact

- Increased number of Northwestern Medicine clinicians to provide primary and specialty care services
- Increased number of patients able to receive care at Northwestern Medicine

Resources

- Funding

Collaborations

- Northwestern Medicine clinical and operational departments

Action 2: Address Capacity

Provide more support for federally qualified health centers and free and charitable care clinics.

Anticipated Impact

- Increased number of patients able to receive care at community sites

Resources

- Funding

Collaborations

- Aunt Martha's
- Family Health Partnership Clinic

Action 3: Education and Programming

Deliver community-based screening, education and care linkage supported by Northwestern Medicine internal medicine residents and Northwestern Medicine clinicians.

Anticipated Impact

- Increased number of community-based programs
- Increased number of community members scheduled for care at Northwestern Medicine Internal Medicine clinics
- Increased number of participants in available programs

Resources

- Funding
- Community Affairs programming

Collaborations

- Municipalities
- School districts
- Community organizations to be determined

Action 4: Grants and Donations

Provide funding and other support for community-led health screening, education and navigation programs.

Anticipated Impact

- Increased number of community-based programs available
- Increased number of community members participating in available programs

Resources

- Funding
- Northwestern Medicine clinicians

Collaborations

- Cultivating Health Ministries
- McHenry County Department of Health



Action 5: Address Social Determinants of Health

Collaborate with community organizations to help remove barriers to care.

Anticipated Impact

- Increased funding for programs
- Socioeconomic needs addressed for more community members

Resources

- Funding
- Public support and advocacy

Collaborations

- McHenry County Department of Health
- American Cancer Society
- United Way of Greater McHenry County

Action 6: Address Social Determinants of Health

Collaborate with community organizations to identify and, where appropriate, support programs that bring healthcare services to community settings and reduce the need to travel for health care.

Anticipated Impact

- Increased number of community-based programs

Resources

- Funding
- Administrative and operational leadership support

Collaborations

- United Way of Greater McHenry County



Priority Health Need: Behavioral Health and Substance Use Disorders



Goal: Improve access to and increase use of services within McHenry County that address behavioral health and substance use disorders.

Behavioral Health and Substance Use Disorders were prioritized as a need in McHenry County. In fact, more than half of survey respondents selected Access to Behavioral Health Services as the most important need within the community. Specific themes that emerged in our findings include the need for better:

- Access to behavioral health care providers, especially those who will provide care to patients with no insurance or Medicaid plans
- Education to improve understanding of insurance and how to navigate access
- Opportunities to decrease stigma

It was noted in our community discussions that there is a passion in McHenry County for adding more mental health services and responding to emerging needs. Northwestern Medicine has a long-standing commitment to collaborate with community organizations that are actively engaged in addressing behavioral health and substance use disorders, and will continue addressing needs through this CHIP.

Focus group participants highlighted the following needs within Behavioral Health and Substance Use Disorders:



Better access to treatment, including more mental health workers and more culturally and linguistically inclusive practices



Information on how to address mental health crises and where to get appropriate care during a mental health emergency



Education to reduce stigma among community members, healthcare professionals and emergency response personnel

“Stigma about seeking behavioral health treatment is a real issue, especially in the Hispanic community.”

- Focus Group Participant

Survey Respondents in McHenry County



53%
Selected **Access to Behavioral Health Services** as the most important need within the community

39.7%
Reported that **they feel nervous, anxious or on edge** every month

17%
Reported **having low social-emotional support**

Action 1: Address Capacity

Collaborate with community organizations to improve access to behavioral health and substance use disorder care in McHenry County.

Anticipated Impact

- Increased funding for community providers
- Increased number of community members receiving care close to where they live or work

Resources

- Funding
- Public support and advocacy

Collaborations

- Aunt Martha's
- Thresholds
- New Directions
- Turning Point
- Additional community organizations to be determined

Action 2: Address Capacity

Evaluate and expand internal behavioral health care capacity through the Northwestern Medicine strategic planning processes.

Anticipated Impact

- Increased number of patients receiving care

Resources

- Funding

Collaborations

- Northwestern Medicine clinical and operational departments

Action 3: Education and Programming

Evaluate and expand ongoing informational and educational programming on behavioral health and substance use disorders to medical professionals, school districts, parents and students.

Anticipated Impact

- Increased funding to support program implementation
- Increased number of training programs provided to the community

Resources

- Funding
- Staff time
- Community Affairs programming

Collaborations

- Municipalities
- School districts
- Community organizations to be determined

Action 4: Grants and Donations

Support community organizations that provide behavioral health and substance use disorder education, programs and services to populations that have historically had limited access to these resources.

Anticipated Impact

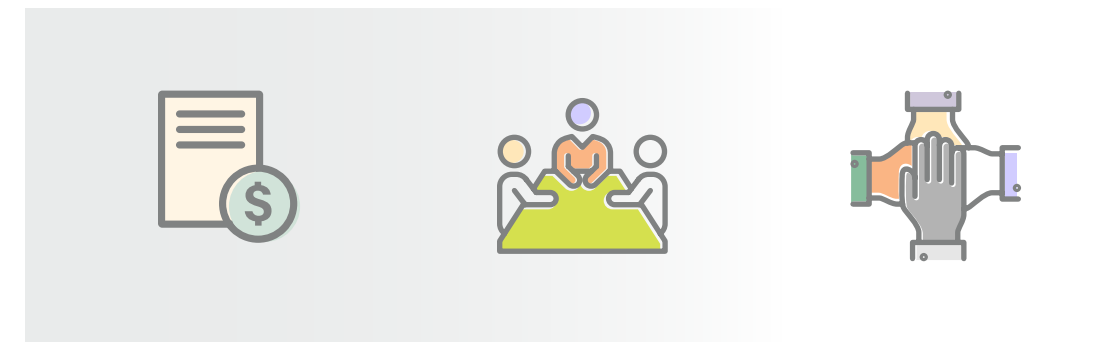
- Increased funding to organizations that provide outreach and education

Resources

- Funding

Collaborations

- Community organizations to be determined



Community Health Implementation Plan Adoption

The adoption of this plan was authorized through a board resolution at the July 11, 2023, meeting of the Northern Illinois Medical Center Board of Directors.

The Northwestern Medicine Hospitals in McHenry County 2024-2026 Community Health Implementation Plan was adopted by the presidents of the Northwestern Medicine hospitals in McHenry County on January 15, 2024.





Northwestern Medicine Huntley Hospital

10400 Haligus Road
Huntley, Illinois 60142
224.654.0000

Northwestern Medicine McHenry Hospital

4201 Medical Center Drive
McHenry, Illinois 60050
815.344.5000

Northwestern Medicine Woodstock Hospital

3701 Doty Road
Woodstock, Illinois 60098
815.338.2500

TTY for all locations: 711

nm.org