



### Dermatology

(Suite 100) 847.535.7664 | TTY for the hearing impaired 312.926.6363



**Cynthia Anyanwu, MD**  
Dermatology



**Rebecca E. Cummins, MD**  
Dermatology



**Melinda E. Simon, MD**  
Dermatology

### Internal Medicine

(Suite 200) 847.535.7157



**Sharon Berliant, MD**  
Internal Medicine



**Robert A. Freilich, MD**  
Internal Medicine



**Daniel J. Goldstein, MD**  
Internal Medicine



**Jeffrey D. Kopin, MD**  
Internal Medicine



**Cori A. Levinson, MD**  
Internal Medicine



**Evan S. Lu, MD**  
Internal Medicine



**Gali Oren-Amit, MD**  
Internal Medicine



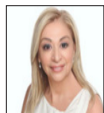
**Steven Phillip Sholl, MD**  
Internal Medicine



**Jeffrey L. Weinberg, MD**  
Internal Medicine

### Obstetrics and Gynecology

(Suite 200) 847.535.7057



**Barbara Diakos, MD**  
Obstetrics and Gynecology



**Rose Diakos, MD**  
Obstetrics and Gynecology

### Immediate Care

(Suite 150) 312.694.CARE (2273) | immediatecare.nm.org | 365 days per year, 8 am – 8 pm | No appointment needed.



**Alon Bloom, MD**  
Immediate Care



**Michael Gershon, DO**  
Immediate Care



**Lubna S. Madani, MD**  
Immediate Care



**Ranilo John C. Rabacal, MD**  
Immediate Care



**Cathy J. Tschannen, MD**  
Immediate Care



**Mary Murray, PA**  
Immediate Care

X-ray and laboratory  
services available onsite