

Northwestern Medicine Glenview Outpatient Center

2701 Patriot Boulevard, Glenview, Illinois 60026 | TTY for the hearing impaired 312.926.6363

Allergy/Endocrinology/Nephrology

Endocrinology: 847.535.7647 | Nephrology: 847.535.7647



Eve D. Bloomgarden, MD
Endocrinology



Yusra R. Cheema, MD
Nephrology



Wenyu Huang, MD
Endocrinology



James J. Paparello, MD
Nephrology



Cheryl Steiman, MD
Allergy



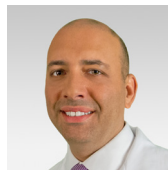
Emily D. Szmilowicz, MD
Endocrinology

Bluhm Cardiovascular Institute

Cardiology: 847.534.3278 | Vascular: 847.535.7665



Mugurel Bazavan, MD
Cardiology



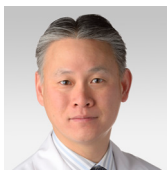
Micah J. Eimer, MD
Cardiology



Benjamin H. Freed, MD
Cardiology



Susan S. Kim, MD
Electrophysiology



Albert Lin, MD
Electrophysiology



Neil J. Stone, MD
Clinical Lipidology



Tadaki M. Tomita, MD
Vascular Surgery



Esther E. Vorovich, MD
Cardiology

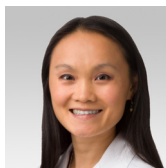
Northwestern Medicine Glenview Outpatient Center

Dermatology

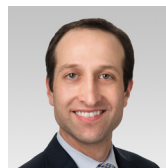
847.535.7664



Gerta S. Janss, MD
Dermatology



Betty Kong, MD
Dermatology



Benjamin R. Marks, MD
Dermatology



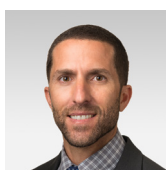
Simon S. Yoo, MD
Dermatology Surgery

Gastroenterology/General Surgery/Hepatology

Digestive Health/Hepatology: 847.535.6083 | General Surgery: 847.234.4310



Steven L. Flamm, MD
Hepatology



James Frydman, MD
Surgery



Christian G. Stevoff, MD
Gastroenterology



Jamie Brenna Wabich, MD
Gastroenterology

Neurosciences

847.535.7658



William C. Davison, MD
Neurology



Ian S. Katznelson, MD
Neurology



Charulatha P. Nagar, MD
Neurology



Michael T. Walsh, MD
Neurological Surgery

Obstetrics and Gynecology/Urology

Obstetrics and Gynecology: 847.535.7057 | Urology: 847.535.7657



Elena Bryce, MD
Obstetrics and Gynecology



Sarah C. Flury, MD
Urology



Micah W. Garb, MD
Obstetrics and Gynecology



Laura M. Glaser, MD
Obstetrics and Gynecology

Northwestern Medicine Glenview Outpatient Center

Obstetrics and Gynecology/Urology (continued)

Obstetrics and Gynecology: 847.535.7057 | Urology: 847.535.7657



Michael S. McGuire, MD
Urology



James Wren, MD
Urology and Male Infertility

Oncology/Otolaryngology (ENT)/Audiology:

Oncology: 847.582.2134 | Otolaryngology: 847.535.6464 | Audiology: 847.535.6464



Landon J. Duyka, MD
Ear, Nose and Throat



Kelly D. Foster, MD
Medical Oncology



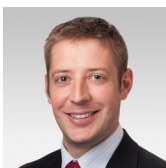
Valerie M. Nelson, MD
Medical Oncology



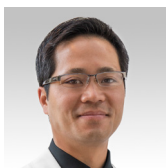
Sara Rudolph, AuD, CCC-A
Audiology

Orthopaedics

847.535.8500



Kevin D. Hardt, MD
Hip and Knee
Replacement



Wellington K. Hsu, MD
Spine Surgery



Matthew D. Jones, MD
Sports Medicine



Gordon W. Nuber, MD
Sports Medicine



Matthew D. Saltzman, MD
Shoulder and Elbow
Replacement

Northwestern Medical Group

TTY for the hearing impaired 312.926.6363
glenview.nm.org

Continued >

Northwestern Medicine Glenview Outpatient Center

Primary Care – Internal Medicine

847.535.7157



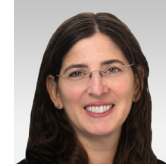
Irena Chizhik, MD
Internal Medicine



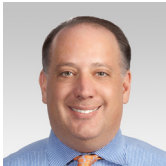
Janusz M. Dudek, MD
Internal Medicine



Marta A. Dudek, MD
Internal Medicine



Elyse T. Esrig, MD
Internal Medicine



Daniel J. Goldstein, MD
Internal Medicine



Martha L. Millar, MD
Internal Medicine



Richard J. Miller, MD
Internal Medicine



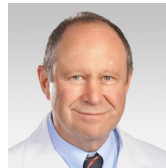
Courtney Noble, MD
Internal Medicine



Colleen M. Nugent, MD
Internal Medicine



Kathryn M. Petrunaro, MD
Internal Medicine



Steven Phillip Sholl, MD
Internal Medicine



Karin B. Ulstrup, MD
Internal Medicine



Leonardo Vargas, MD
Internal Medicine



Dana R. Wood, MD
Internal Medicine

Northwestern Medicine Glenview Outpatient Center

Primary Care – Pediatrics

312.926.7337



Miriam Dreifuss, MD
Pediatrics



Theresa L. Karacic, MD
Pediatrics



Jennifer Kim, MD
Pediatrics



Peter A. Lechman, MD
Pediatrics

Pulmonology

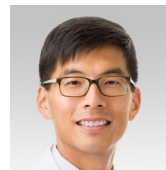
847.535.7647



Frank S. Becker, MD
Pulmonology



Min Qi, MD
Pulmonology



Jason C. Rho, MD
Pulmonology

Rheumatology

847.535.7647



Amy M. Archer, MD
Rheumatology



Mary A. Mahieu, MD
Rheumatology



Eric M. Ruderman, MD
Rheumatology

Vision Care Center

Ophthalmology: 847.535.6440 | Optometry: 847.535.6440



Meghan E. Geiger, OD
Optometry



Mary-Ann M. Mathias, MD
Ophthalmology



David J. Palmer, MD
Ophthalmology

Northwestern Medical Group

TTY for the hearing impaired 312.926.6363
glenview.nm.org

Continued >

Northwestern Medicine Glenview Outpatient Center

Immediate Care

847.475.CARE (2273) | immediatecare.nm.org | No appointment needed

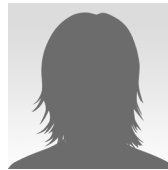
Open 365 days per year, 8 am – 8 pm (last patient registration at 7:45 pm). Holiday hours: 8 am – 4 pm.



Jack Franaszek, MD
Immediate Care



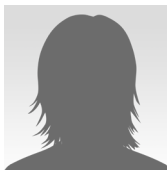
Lubna Madani, MD
Immediate Care



Ann Manikas, PA
Immediate Care



Dennis Peacock, MD
Immediate Care



Krista Puckett, APN
Immediate Care



Aleksandar Radovic, MD
Immediate Care



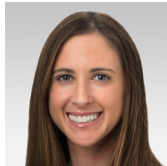
Cia-Mattae Sevier, MD
Immediate Care



Robyn Wall, PA
Immediate Care



Dorian Woods, MD
Immediate Care



Marcy Zirlin, MD
Immediate Care

Imaging, laboratory and rehabilitation services are available on-site



Northwestern Medical Group

TTY for the hearing impaired 312.926.6363
glenview.nm.org