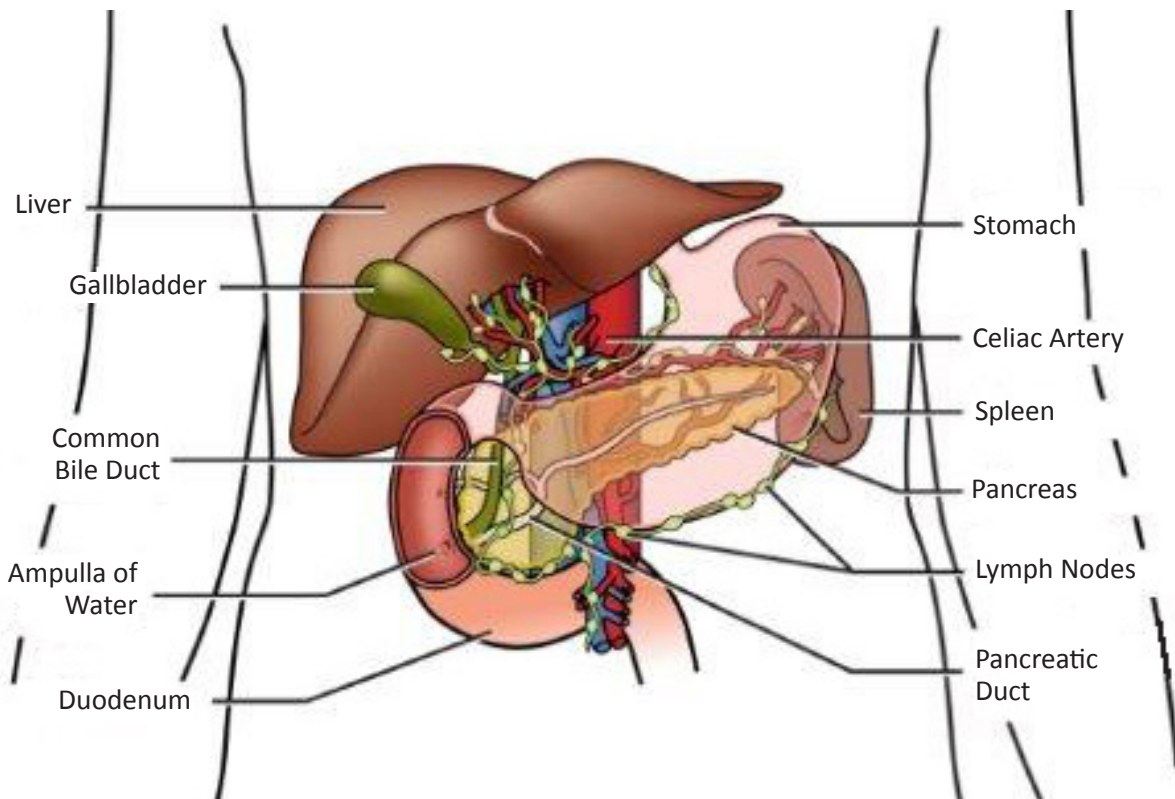


Liver and GI Organs



Para asistencia en español, por favor llamar al Departamento de Representantes para Pacientes al 312.926.3112.

The entities that come together as Northwestern Medicine are committed to representing the communities we serve, fostering a culture of inclusion, delivering culturally competent care, providing access to treatment and programs in a nondiscriminatory manner and eliminating healthcare disparities. For questions, please call either Northwestern Memorial Hospital's Patient Representatives Department at 312.926.3112, TDD/TTY 312.926.6363 and/or the Northwestern Medical Group Patient Representatives Department at 312.695.1100, TDD/TTY 312.695.3661.

Developed by: NMH Digestive Health Clinic (Interventional Gastroenterology)

©May 2016 Northwestern Memorial HealthCare
For additional information about Northwestern Medicine, please visit our website at nm.org.
900003 (5/16) Liver and GI Organs