

Your Journey Through Emergency Treatment

Thank you for trusting Northwestern Medicine for your healthcare needs. Your Emergency Department (ED) care team is here to start you on the road to recovery.

1



You have become ill or had an accident and arrived at the ED. Please do not eat or drink anything while you wait.

2



First, we will check you in. We will ask for basic information, such as your name and why you are here.

3



Your next stop is triage, where we will get your vital information and prioritize your care.

5



A clinician will examine you. They may order imaging, medication or laboratory testing. They will start your care plan.

4



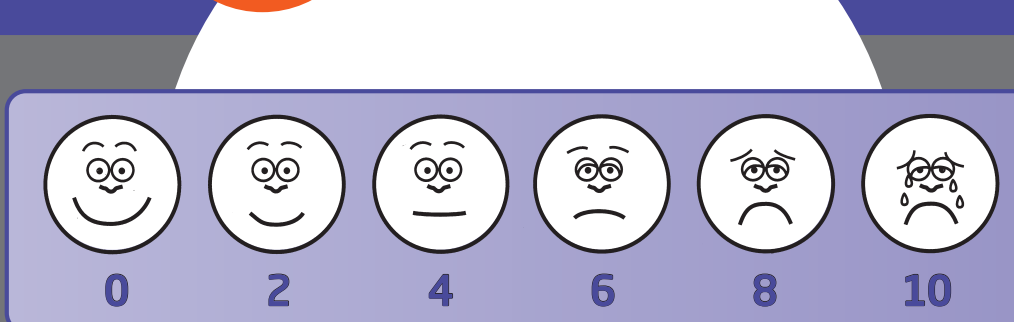
To help you get care faster, we may start tests before you go to an exam room.

6



This is how many hours you might wait for results:
Ultrasound: 4 to 5
Lab tests: 1 to 2
CT scan: 3 to 5
X-ray: 1 to 2

7



Your care team will assess and manage your pain.

8



If you have had testing or imaging done, the results will help guide your care plan.

10

Ask us!

We can answer any questions you have about your instructions and follow-up care.

9

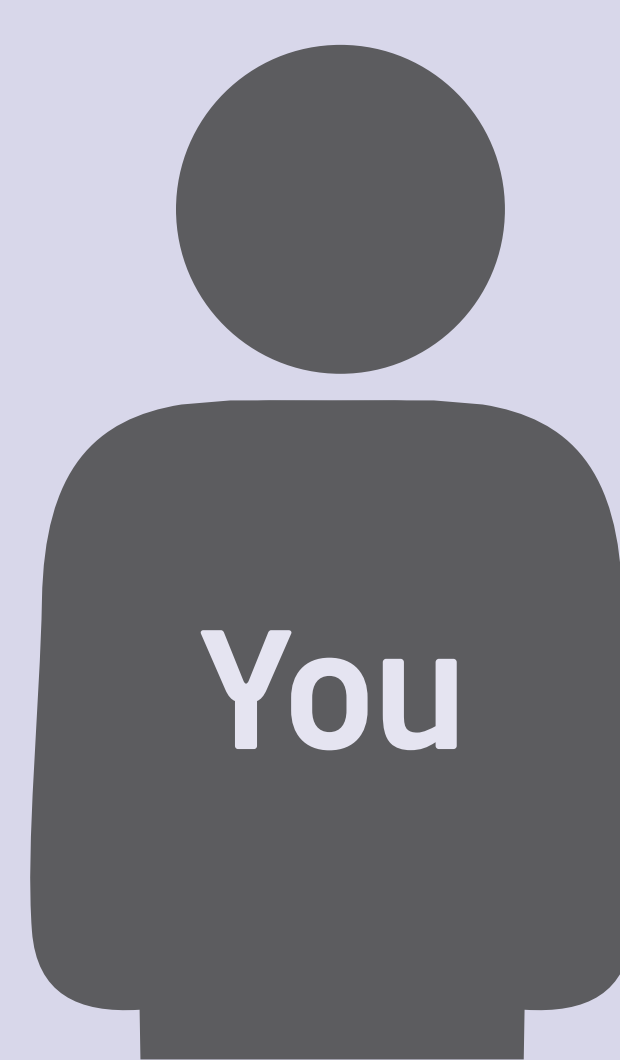
Decision time

We will decide if you can safely go home, or if you should be admitted to the hospital. On average, for every 10 patients in the ED, 7 will go home and 3 will be admitted to the hospital.

Your care team may include:



Tech



You



Physician



Nurse



Physician assistant
or nurse practitioner

Worth the wait!

Quality care takes time, and your progress guides the care team to create a plan that meets your unique needs. You might need more testing or care from other specialists. Our goal is to deliver excellent care to every patient.

