


The relationship between esophageal acid exposure and the esophageal response to volumetric distention

D. A. Carlson¹  | P. Kathpalia² | J. Craft¹ | M. Tye¹ | Z. Lin¹  | P. J. Kahrilas¹ | J. E. Pandolfino¹

¹Division of Gastroenterology and Hepatology, Department of Medicine, Feinberg School of Medicine, Northwestern University, Chicago, IL, USA

²Division of Gastroenterology and Hepatology, Department of Medicine, University of California San Francisco, San Francisco, CA, USA

Correspondence

Dustin A. Carlson, Department of Medicine, Division of Gastroenterology and Hepatology, Feinberg School of Medicine, Northwestern University, Chicago, IL, USA.
Email: dustin-carlson@northwestern.edu

Funding information

This work was supported by a Northwestern Digestive Health Foundation award (DAC) and National Institutes of Health, Grant/Award Number: R01 DK092217 (JEP) from the Public Health service

Abstract

Background: Increased esophagogastric junction (EGJ) distensibility is thought to contribute to gastroesophageal reflux disease (GERD). Using the functional lumen imaging probe (FLIP), we aimed to assess the esophageal response to distension among patients undergoing esophageal pH monitoring.

Methods: 25 patients (ages 22-73; 13 females) who underwent ambulatory wireless esophageal pH testing while off proton-pump inhibitors were evaluated with FLIP during sedated upper endoscopy. Esophageal reflux was quantified by total percent acid exposure time (AET; <6% was considered normal). FLIP studies were analyzed using a customized program generate FLIP topography plots to identify esophageal contractility patterns and to calculate the EGJ-distensibility index (DI). Reflux symptoms were assessed with the GERDQ. Values reflect median (interquartile range).

Results: Among all patients, the AET was 7.2% (3.7-11.1) and EGJ-DI was 4.2 (2.5-7.6) mm²/mm Hg. Repetitive antegrade contractions (RACs) were induced in 19/25 (76%) of patients; AET was lower among patients with (6.1%, 3-7.8) than without (14.9, 8.5-22.3) RACs ($P = .009$). Correlation was weak and insignificant between AET and EGJ-DI, GERDQ and AET, and GERDQ and EGJ-DI. Patients with abnormal AET ($n = 16$) and normal AET ($n = 9$) had similar EGJ-DI, 4.6 mm²/mm Hg (2.9-9.2) vs 3.2 (2.2-5.1), $P = .207$ and GERDQ, $P = .138$.

Conclusions: Abnormal esophageal acid exposure was associated with an impaired contractile response to volume distention of the esophagus. This supports that acid exposure is dependent on acid clearance mechanisms.

KEYWORDS

functional lumen imaging probe, GERD, impedance, peristalsis, reflux

1 | INTRODUCTION

Gastroesophageal reflux disease (GERD) is a commonly encountered condition that often involves one or more contributing pathophysiologic abnormalities.¹ Esophagogastric junction (EGJ) incompetence is a primary factor related to the development of GERD, thus

measurement of alterations in EGJ-distensibility may help characterize patients. Studies utilizing barostat distension of the EGJ demonstrated increased EGJ-distensibility (ie greater EGJ diameters at lower distending-pressures) among GERD patients with and without hiatal hernia.^{2,3} However, use of the barostat is limited by its cumbersome nature and accurate assessments of esophageal distensibility are somewhat limited with traditional methods of esophageal disease evaluation (ie upper endoscopy, manometry, and barium-radiography).

Abbreviations: AET, acid exposure time; CSA, cross-sectional area; DI, distensibility index; EGJ, esophagogastric junction; FLIP, functional lumen imaging probe; GERD, gastroesophageal reflux disease; RACs, repetitive antegrade contractions.

The functional lumen imaging probe (FLIP) utilizes high-resolution impedance planimetry to measure the relationship of luminal dimensions and distensive pressure (ie distensibility) during controlled, volumetric distension. The FLIP is commercially available and can be easily applied during a sedated upper endoscopy, thus it offers the potential to aid clinical characterization of patients presenting with GERD symptoms. Although EGJ-distensibility was assessed with FLIP in several previous studies, results regarding the association between EGJ-distensibility and GERD have been inconsistent.⁴⁻⁸ Distension-induced contractility can also be assessed using the FLIP, though this evaluation has not been previously described among patients evaluated for GERD.^{9,10}

The role of FLIP for diagnostic evaluation and targeted management in GERD remains appealing, however inconsistent results among prior studies applying FLIP measurement of EGJ-distensibility in GERD limits support of this application. Thus, we aimed to assess the association of esophageal acid exposure with the esophageal response to distension utilizing FLIP.

2 | METHODS

2.1 | Subjects

Patients presenting to the Esophageal Center of Northwestern for evaluation of suspected GERD and scheduled for upper endoscopy with wireless pH monitoring between May 2016 and December 2016 were prospectively included. Indication for reflux monitoring was classified as typical reflux symptoms (heartburn or regurgitation), chest pain, extraesophageal reflux symptoms (cough, laryngitis, globus), or other. Upper endoscopy was completed using sedation with midazolam (2-15 mg) and fentanyl (0-300 mcg); propofol (in addition to midazolam and fentanyl) was used with anesthesiologist assistance at the discretion of the performing endoscopist in one case. Patients with previous upper gastrointestinal surgery, significant medical comorbidities, eosinophilic esophagitis, severe reflux esophagitis (LA-classification C or D), or hiatal hernia >3 cm were excluded.

Reflux symptoms were assessed and quantified using the GERDQ, a widely used, validated, 6-item self-report measure with questions evaluating common reflux symptoms (heartburn, regurgitation, chest pain), sleep disturbance, and antacid use.¹¹ A GERDQ score >8 was considered abnormal. Informed consent was obtained from each subject and the study protocol was approved by the Northwestern University Institutional Review Board.

2.2 | Functional lumen imaging probe

The FLIP assembly consisted of a 240-cm long, 3-mm outer diameter catheter with an 18-cm, infinitely compliant balloon (up to a distension volume of 60 mL) mounted near the distal end of the catheter (EndoFLIP[®]; Crospon, Inc, Galway, Ireland). The balloon tapered at both ends to assume a 16-cm long cylindrical shape in the center that housed 17 impedance planimetry ring electrodes spaced at 1-cm intervals and a solid-state pressure transducer positioned at the distal

Key Points

- The esophageal response to distension includes esophago-gastric junction competence and secondary peristalsis, which are relevant to reflux disease and can be evaluated using the functional lumen imaging probe (FLIP).
- A response to volumetric distension comprising repetitive, antegrade contractions was associated with a reduced degree of esophageal acid exposure among patients evaluated for reflux.
- Esophageal acid exposure is dependent on mechanisms associated with acid clearance.

end to provide simultaneous measurement of 16 channels of cross-sectional area (CSA) converted to diameter based on the assumption of circular geometry and intra-balloon pressure.

FLIP was completed immediately following sedated upper endoscopy while the patient was in the left lateral decubitus position. The FLIP probe was pressure-zeroed to atmospheric pressure and was placed trans-orally and positioned with the distal 2-3 impedance sensors beyond the EGJ as confirmed by demonstration of a waist in the impedance planimetry segment at a balloon distension volume of 20-30 mL. The FLIP assembly position was adjusted by the endoscopist during the study to maintain placement relative to the EGJ as visualized on real-time output. Simultaneous CSAs and intra-balloon pressures were measured during 10 mL stepwise distensions beginning with 20 mL and increasing to target volume of 70 mL with each incremental distension volume maintained for 20-30 seconds.

2.3 | FLIP data analysis

FLIP data including distension volume, intra-balloon pressure, and 16 channels of luminal diameter for each subject were exported to MATLAB (The Math Works, Natick, MA, USA) for analysis using a customized MATLAB program.¹² This program applied a filter to minimize vascular and respiratory artifact and then generated tracings of each channel's luminal diameter. Interpolation between channels was applied to generate color-coded topography plots by time with corresponding plots of volume distension and intra-balloon pressure; Figure 1. The program identified the EGJ-midline by searching for the minimal diameter of the distal impedance planimetry channels. The EGJ-distensibility index (EGJ-DI) was calculated by measuring the narrowest EGJ CSA and intra-balloon pressure at each data sample obtained during the time course at the 60-mL distension volume.¹³ The median values for narrowest EGJ CSA and intra-balloon pressure were then divided to calculate the EGJ-DI (CSA/pressure; mm²/mm Hg).

Esophageal body contractions were identified by a transient decrease of ≥ 5 mm in the measured luminal diameter detected in ≥ 2 adjacent axial impedance planimetry channels using the FLIP topography plots and 16 channel diameter tracing output.^{9,14} Contractions

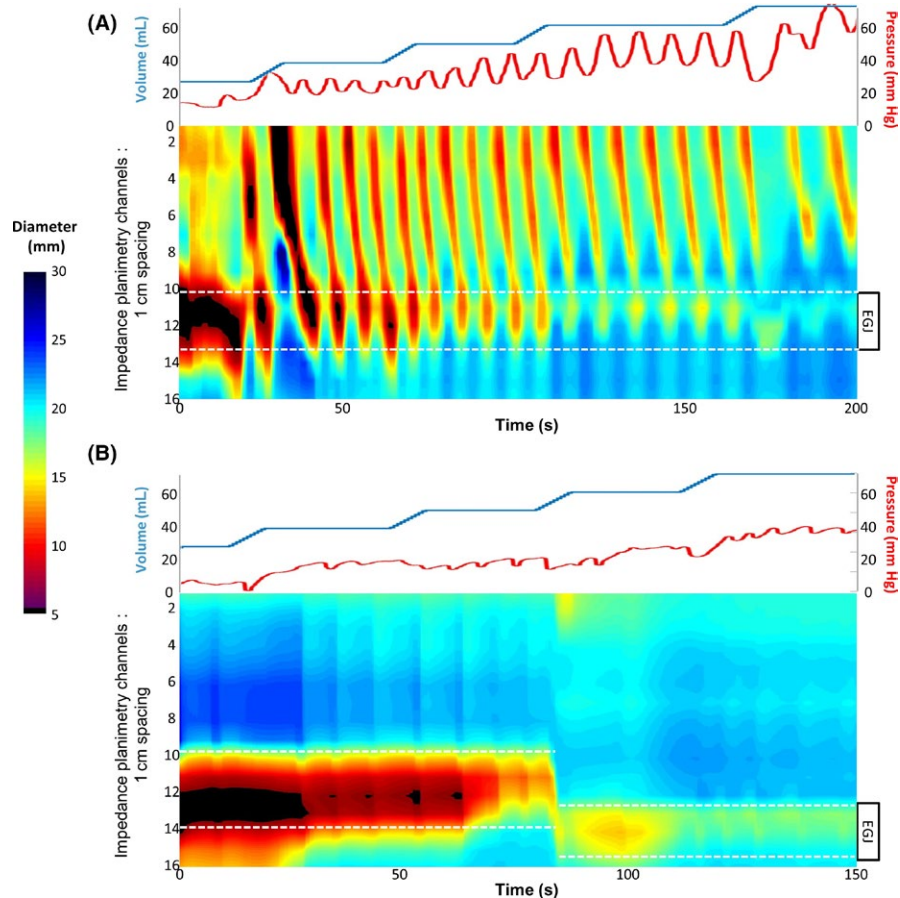


FIGURE 1 Functional lumen imaging probe (FLIP) topography plots. Distension volume (top, blue line), and intra-balloon pressure (top, red line), and FLIP topography (bottom) from two patients are displayed. The position of the esophagogastric junction (EGJ) is noted by the white dashed lines. (A) Repetitive, antegrade contractions are present and the EGJ-distensibility index (DI) at the 60-mL fill volume was 6.7 mm²/mm Hg. The worst day of total acid exposure time (AET) was 4.9%. (B) No esophageal contractility was induced and the EGJ-DI at the 60-mL fill volume was 4.7 mm²/mm Hg. The worst day AET was 29%. Figure used with permission from the Esophageal Center at Northwestern

were described in terms of propagation direction (antegrade or retrograde) based on the tangent line placed on the onset of contraction. Contractions were considered repetitive (repetitive, antegrade contractions, RACs, or repetitive, retrograde contractions, based on propagation direction) when ≥ 3 occurred consecutively. The presence of RACs and repetitive, retrograde contractions was not mutually exclusive, thus both could be present in a single patient over the course of the FLIP study.

2.4 | Esophageal pH monitoring

All patients stopped proton-pump inhibitor therapy for at least 7 days prior to esophageal pH monitoring. The Bravo wireless pH capsule (Medtronic Inc, Shoreview, MN, USA) was placed following endoscopy and FLIP. The delivery system was placed trans-orally into the esophagus and positioned so that the pH electrode was 6 cm proximal to the squamocolumnar junction, where the pH capsule was secured to the adjacent esophageal mucosa. The recording period extended for 96 hours with each test day analyzed separately. Patient position (supine, upright) and meal times were based on patient recording and diary; meal times were excluded from the analysis. Using esophageal pH < 4 as indicative of reflux, the measures outcomes included the % time pH < 4 (acid exposure time, AET), number of reflux events, and longest reflux event. The worst day, ie most extreme measure, for each variable was included in analysis to maintain independence

of variables. Abnormal AET was considered if any day had a total AET > 6%.¹⁵ Additionally, the number of abnormal days (0-4), ie days with total AET > 6%, was tabulated.

2.5 | Statistical analysis

Descriptive statistics for all continuous and ordinal measures were presented as median (IQR), unless otherwise stated. Correlations were assessed using Spearman's rho. Groups were compared using the Kruskal-Wallis or Mann-Whitney *U* test for continuous variables and χ^2 or Fischer's Exact tests for dichotomous and categorical variables. Analyses assumed a 5% level of statistical significance.

3 | RESULTS

3.1 | Subjects

25 patients completed the study protocol (ages 22-73, 13 females) and entail the included study cohort; three other patients consented but were excluded at the time of endoscopy for LA-C esophagitis (1), hiatal hernia >3 cm (1), and a technical malfunction of the FLIP pressure sensor (1). Indication for reflux monitoring was for typical reflux symptoms in 13 (52%), chest pain in four (16%), extra-esophageal symptoms in six (24), and other symptoms in two (8%: one for abdominal pain, one for nausea). Three patients underwent

testing for both typical and extraesophageal symptoms. Endoscopy demonstrated a hiatal hernia ≤ 3 cm in 7 (28%), LA-B esophagitis in one patient (also with hiatal hernia), and LA-A esophagitis in two patients (neither with hiatal hernia); endoscopies were otherwise normal. One patient did not complete the GERDQ, among the remaining 24 patients, median (IQR) GERDQ scores were 9 (6-10); 12 (50%) were abnormal.

3.2 | Esophageal pH monitoring

Among the total cohort, the worst day of AET was 7.2% (3.7-11.1); there were 16 (64%) with abnormal esophageal acid exposure. All seven patients with hiatal hernia also had abnormal AET, as did all three with low-grade esophagitis; there otherwise were no significant differences in clinical characteristics between patients with and without abnormal AET (Table 1). Among those with abnormal AET, eight (50%) had 1 day positive, five (31%) had 2 days positive, two (13%) had 3 days positive, and one (6%) had all 4 days positive.

Correlation (Spearman's rho) of GERDQ with reflux parameters included 0.265 with total AET, 0.342 with upright AET, -0.227 with supine AET, 0.276 with number of reflux episodes, and -0.095 with longest reflux episode. None of these correlations were statistically significant.

3.3 | Association of distension-induced contractility with reflux parameters

Esophageal contractility was observed on FLIP topography in all patients but one (96%); Figure 1. RACs were present in 19 (76%). Repetitive, retrograde contractions were present in three (12%), two of which also had RACs. Total AET was lower in patients exhibiting

RACs, 6.1% (3.0-7.8), than those that did not generate RACs, 14.9% (8.5-22.3), $P = .009$; Figure 2. Among the six patients without RACs, five (83%) RACs had an abnormal AET while EGJ-DIs ranged from 0.4 to 9.0 mm²/mm Hg (median 2.2 mm²/mm Hg). The dosages of sedation agents were similar between patients with and without RACs: midazolam (median, IQR 7, 5-10 mg vs 5, 4-8 mg; $P = .120$); fentanyl (125, 100-175 mcg vs 100, 88-163 mcg; $P = .265$).

Supine AET also differed between patients with RACs, 2.8% (0.1-8.7), and without RACs, 17.3 (10.4-33.7), $P = .007$; Figure 2. Upright AET (1.7%, 0.9-2.3 vs 2%, 1.8-2.6; $P = .198$), number of reflux episodes (35, 20-48 vs 42, 30-55; $P = .303$), and longest reflux episode (21 minutes, 10-41 vs 40 minutes, 22-93; $P = .106$) were similar between patients with and without RACs. GERDQ was also similar between patients with and without RACs, 9 (7-10) vs 7 (6-10); $P = .581$.

3.4 | Association of EGJ-distensibility with reflux parameters

Among the total cohort, the EGJ-DI was 4.2 mm²/mm Hg (2.5-7.6), with the median diameter at the 60-mL fill volume was 14.8 mm (11.8-18.9) and the median pressure was 40.9 mm Hg (33.9-53). EGJ-DI and total AET were poorly correlated ($\rho = 0.169$); Figure 3A. EGJ-DI did not differ between patients with abnormal AET, 4.6 mm²/mm Hg (2.8-9.2), and normal AET, 3.2 (2.2-5.1); $P = .207$. EGJ-DI did not differ by number of days with abnormal AET, $P = .179$, Figure 3B.

Correlation (Spearman's rho) of EGJ-DI with upright AET was 0.196, supine AET was 0.074, number of reflux episodes (Figure 3C) was -0.240 , and longest reflux episode was 0.237. The correlation of GERDQ with EGJ-DI was 0.286 (Figure 3D). None of these correlations were statistically significant.

TABLE 1 Clinical characteristics by esophageal acid exposure. Abnormal acid exposure time (AET) was considered at a worst day of $>6\%$

| | Abnormal AET | Normal AET |
|----------------------------------|--------------|----------------|
| n | 16 | 9 |
| Age, years, mean (range) | 50 (22-73) | 45 (27-67) |
| Gender (% female) | 50 | 56 |
| Indication for pH testing, n (%) | | |
| Typical symptoms | 9 (53) | 4 (44) |
| Chest pain | 1 (6) | 3 (33) |
| Extraesophageal symptoms | 6 (38) | 0 |
| Other | 0 | 2 (22) |
| Endoscopy findings | | |
| Esophagitis, n LA-A/B | 2/1 | 0 |
| Hiatal hernia, n (%) | 7 (44) | 0 ^a |
| GERDQ, median (IQR) | 10 (6-11) | 7 (6-9) |
| GERDQ > 8 , n (%) | 6 (40) | 6 (67) |

^a P -value $< .05$ when compared with abnormal AET.

4 | DISCUSSION

We aimed to assess the association of esophageal acid exposure with the esophageal response to distension among patients undergoing GERD evaluation with wireless esophageal pH monitoring and FLIP and demonstrated that although EGJ-distensibility was not consistently associated with esophageal acid exposure, impairment in distension-induced contractility carried an association with greater esophageal acid exposure.

The pathophysiology related to GERD is multifactorial and involves factors associated with the anti-reflux barrier and those related to esophageal acid clearance.¹ A study of healthy controls recognized that during acid reflux episodes, primary peristalsis is largely responsible for acid clearance in the awake state while secondary peristalsis is more integral in the sleep or supine state.¹⁶ In another study, after analyzing 595 episodes of documented GERD, nearly 82% of motor events during this period were due to primary peristaltic activity while the remaining 18% were due to secondary peristalsis or ineffective motility.¹⁷ Furthermore, triggering of secondary peristalsis was shown to occur less frequently among patients with erosive and non-erosive GERD than asymptomatic controls.^{18,19}

FIGURE 2 Acid exposure time (A-total; B-supine) among patients with and without distension-induced repetitive, antegrade contractions (RACs). Group median values are displayed as black bars

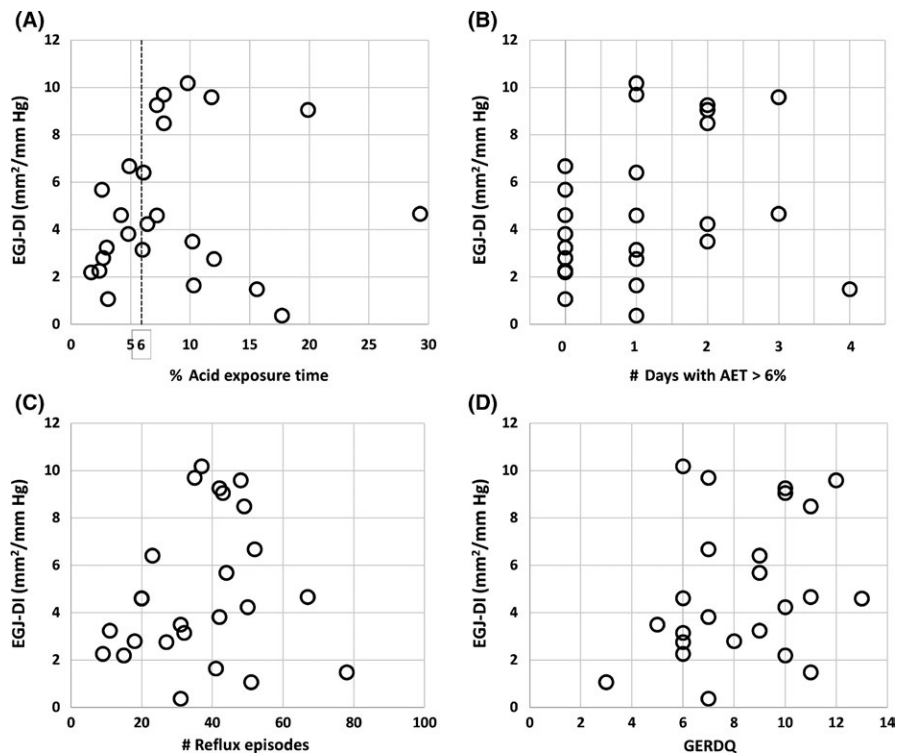
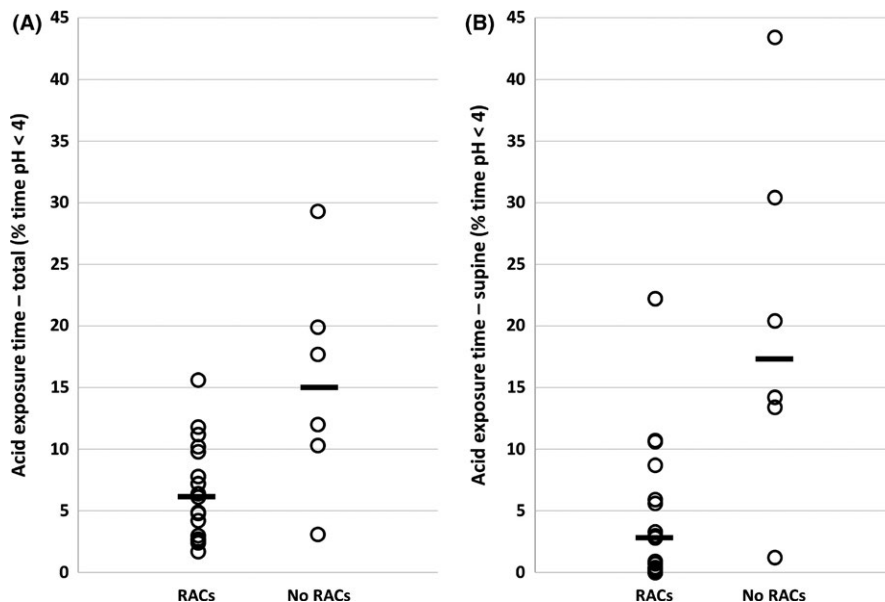


FIGURE 3 Correlation of esophageal distensibility with reflux parameters (A-C) and symptom score (D)

The volumetric filling of the FLIP and associated distension of the esophageal induces secondary peristalsis. Because the esophageal distension is maintained over the course of the FLIP study, the normal esophageal response to this sustained esophageal distension is the manifestation of RACs.⁹ In our initial evaluation of FLIP-associated motility, we observed RACs in 80% of healthy, asymptomatic controls.⁹ Although this cohort of controls was not evaluated with manometry, we also frequently observed RACs on FLIP among dysphagia patients with normal esophageal peristalsis.¹⁰ Unfortunately, manometry was not routinely obtained among the GERD cohort evaluated for the present study to better assess the relationships between primary

and secondary peristaltic function with esophageal acid exposure. However, our results support that an impaired contractile response to esophageal distension is associated with greater esophageal acid exposure. Secondary peristalsis likely plays a larger role in esophageal clearance during sleep when swallowing is suppressed, thus it seems fitting that we observed a more exaggerated increase in acid exposure during the supine periods among patients without induction of RACs.

Previous studies utilizing a barostat demonstrated that increased EGJ-distensibility was associated with GERD, however feasibility of barostat use limits its application to clinical practice.^{2,3} The FLIP provides a clinically available method to objectively assess esophageal

distensibility EGJ however conflicting results on the association between EGJ-distensibility and GERD were observed among studies utilizing FLIP. An initial study applying the FLIP to patients with typical GERD symptoms demonstrated increased EGJ-DI (mm²/mm Hg) compared with healthy controls.⁴ Additionally, EGJ-DI was positively correlated with reflux symptom scores among patients with Barrett's esophagus and hiatal hernia.⁵ However, a subsequent study assessing patients with FLIP and wireless esophageal pH monitoring found that patients with GERD symptoms actually had lower EGJ-DI than controls, and EGJ-DI did not differ between patients with normal (n = 9) or abnormal (n = 9) esophageal acid exposure.⁶ Another study that evaluated patients treated with trans-oral incisionless fundoplication (TIF) demonstrated that pre-operative EGJ-DI was not correlated with pre-operative AET, nor was EGJ-distensibility at 6-month post-TIF follow-up associated with normalization of AET.⁷ Similarly, we did not observe a significant correlation of EGJ-DI with AET, nor did we observe a difference in EGJ-DI associated with categorized AET.

However, the current and previous studies evaluating GERD patients with FLIP assume the EGJ-DI is synonymous with EGJ-distensibility. The EGJ-DI, ie the narrowest single CSA within the EGJ divided by distensive pressure, was demonstrated as an effective metric to identify esophageal outflow obstruction among patients with achalasia and dysphagia.^{10,13,20} Thus, while the EGJ-DI appears well suited for the evaluation of dysphagia and its simplicity makes it appealing to clinical application, it may not be the ideal measure to assess GERD physiology.²¹ Gastroesophageal reflux is primarily an episodic event that occurs when the gastro-esophageal pressure gradient overcomes the anti-reflux barrier, which can occur at relatively small EGJ opening diameters induced by small pressure increments. While this GERD-related EGJ opening was able to be assessed using the pressure-controlled barostat method, the volume-controlled distension of the typical FLIP study protocol and use of the EGJ-DI may not reflect the appropriate paradigm to assess reflux susceptibility.^{2,3} Thus modifications to the FLIP study protocol, such as utilizing small volume or pressure (possibly zeroed to gastric pressure to reflect a reflux-generating pressure)-directed distension, and analytic approach, such as incorporation of other measures of EGJ biomechanics (eg yield pressure or elastic modulus), are likely needed to optimize FLIP use for GERD assessment.

Limitations of our study also include the fairly heterogeneous clinical cohort resulting from inclusion of both patients with typical and atypical reflux symptoms. While this was intended to aid providing a greater number of patients with normal AET (ie somewhat of a "patient-control" group), studying a more homogenous GERD population, could potentially yield more consistent results related to EGJ-distensibility in GERD. Additionally, although we further attempted to supplement the GERD evaluation by utilizing a validated GERD questionnaire, we found poor correlations between the symptom scores with both FLIP and esophageal pH parameters, which speaks to the further complexity of symptom-generation related to reflux.

Ultimately, GERD pathogenesis and symptom generation is complex and multifactorial. Our results support the previous literature

that FLIP-assessed EGJ-distensibility (using the EGJ-DI) is inconsistently associated with esophageal acid exposure, though our novel FLIP-motility paradigm observed that the esophageal contractile response to distension was associated with esophageal acid exposure. Competence of the EGJ remains an important factor in GERD, thus further study to optimize its evaluation is needed. While the role of FLIP in the GERD evaluation remains an evolving question, the esophageal response to distension appears to be an important component of esophageal function, thus its assessment holds promise to aid characterizing patients evaluated for reflux.

ACKNOWLEDGMENTS

We thank Katherine Ritter and Sophia Falmagne for their assistance with data acquisition.

DISCLOSURES

John E. Pandolfino: Crospon, Inc (stock options), Given Imaging (Consultant, Grant, Speaking), Sandhill Scientific (Consulting, Speaking), Takeda (Speaking), Astra Zeneca (Speaking). Dustin A. Carlson, Priya Kathpalia, Jenna Craft, Michael Tye, Zhiyue Lin, Peter J. Kahrilas: none.

AUTHOR CONTRIBUTIONS

DAC contributed to study concept and design, obtaining funding, data analysis, data interpretation, drafting of the manuscript, and approval of the final version. PK contributed to data analysis, drafting of the manuscript, and approval of the final version. JC, MT, and ZL contributed to data analysis and approval of the final version. PJK contributed revising the manuscript critically, and approval of the final version. JEP contributed to study concept and design, revising the manuscript critically, and approval of the final version.

ORCID

D. A. Carlson  <http://orcid.org/0000-0002-1702-7758>

Z. Lin  <http://orcid.org/0000-0001-5387-6952>

REFERENCES

1. Bredenoord AJ, Pandolfino JE, Smout AJ. Gastro-oesophageal reflux disease. *Lancet*. 2013;381:1933-1942.
2. Pandolfino JE, Shi G, Curry J, et al. Esophagogastric junction distensibility: a factor contributing to sphincter incompetence. *Am J Physiol Gastrointest Liver Physiol*. 2002;282:G1052-G1058.
3. Pandolfino JE, Shi G, Trueworthy B, et al. Esophagogastric junction opening during relaxation distinguishes nonhernia reflux patients, hernia patients, and normal subjects. *Gastroenterology*. 2003;125:1018-1024.
4. Kwiatek MA, Pandolfino JE, Hirano I, et al. Esophagogastric junction distensibility assessed with an endoscopic functional luminal imaging probe (EndoFLIP). *Gastrointest Endosc*. 2010;72:272-278.
5. Lottrup C, McMahon BP, Ejstrup P, et al. Esophagogastric junction distensibility in hiatus hernia. *Dis Esophagus*. 2016;29:463-471.

6. Tucker E, Sweis R, Anggiansah A, et al. Measurement of esophago-gastric junction cross-sectional area and distensibility by an endoluminal functional lumen imaging probe for the diagnosis of gastro-esophageal reflux disease. *Neurogastroenterol Motil.* 2013;25:904-910.
7. Smeets FG, Keszthelyi D, Bouvy ND, et al. Does measurement of esophagogastric junction distensibility by EndoFLIP predict therapy-responsiveness to endoluminal fundoplication in patients with gastro-esophageal reflux disease? *J Neurogastroenterol Motil.* 2015;21:255-264.
8. Hirano I, Pandolfino JE, Boeckxstaens GE. Functional lumen imaging probe for the management of esophageal disorders: expert review from the clinical practice updates committee of the AGA institute. *Clin Gastroenterol Hepatol.* 2017;15:325-334.
9. Carlson DA, Lin Z, Rogers MC, et al. Utilizing functional lumen imaging probe topography to evaluate esophageal contractility during volumetric distention: a pilot study. *Neurogastroenterol Motil.* 2015;27:981-989.
10. Carlson DA, Kahrilas PJ, Lin Z, et al. Evaluation of esophageal motility utilizing the functional lumen imaging probe. *Am J Gastroenterol.* 2016;111:1726-1735.
11. Jonasson C, Wernersson B, Hoff DA, et al. Validation of the GerdQ questionnaire for the diagnosis of gastro-oesophageal reflux disease. *Aliment Pharmacol Ther.* 2013;37:564-572.
12. Lin Z, Nicodeme F, Boris L, et al. Regional variation in distal esophagus distensibility assessed using the functional luminal imaging probe (FLIP). *Neurogastroenterol Motil.* 2013;25:e765-e771.
13. Pandolfino JE, de Ruigh A, Nicodeme F, et al. Distensibility of the esophagogastric junction assessed with the functional lumen imaging probe (FLIP) in achalasia patients. *Neurogastroenterol Motil.* 2013;25:496-501.
14. Carlson DA, Lin Z, Kahrilas PJ, et al. The functional lumen imaging probe detects esophageal contractility not observed with manometry in patients with achalasia. *Gastroenterology.* 2015;149:1742-1751.
15. Roman S, Gyawali CP, Savarino E, et al. Ambulatory reflux monitoring for diagnosis of gastro-esophageal reflux disease: update of the porto consensus and recommendations from an international consensus group. *Neurogastroenterol Motil.* 2017;29:1-15.
16. Barham CP, Gotley DC, Miller R, et al. Pressure events surrounding oesophageal acid reflux episodes and acid clearance in ambulant healthy volunteers. *Gut.* 1993;34:444-449.
17. Anggiansah A, Taylor G, Bright N, et al. Primary peristalsis is the major acid clearance mechanism in reflux patients. *Gut.* 1994;35:1536-1542.
18. Schoeman MN, Holloway RH. Integrity and characteristics of secondary oesophageal peristalsis in patients with gastro-oesophageal reflux disease. *Gut.* 1995;36:499-504.
19. Iwakiri K, Hayashi Y, Kotoyori M, et al. Defective triggering of secondary peristalsis in patients with non-erosive reflux disease. *J Gastroenterol Hepatol.* 2007;22:2208-2211.
20. Rohof WO, Hirsch DP, Kessing BF, et al. Efficacy of treatment for patients with achalasia depends on the distensibility of the esophago-gastric junction. *Gastroenterology.* 2012;143:328-335.
21. Gregersen H. Analysis of functional luminal imaging probe data. *Clin Gastroenterol Hepatol.* 2017;15:1313-1314.

How to cite this article: Carlson DA, Kathpalia P, Craft J, et al. The relationship between esophageal acid exposure and the esophageal response to volumetric distention. *Neurogastroenterol Motil.* 2017;e13240. <https://doi.org/10.1111/nmo.13240>