

Naloxone (Narcan)

McHenry Western Lake County
EMS



Objectives

- During this session we will discuss:
- Class
- Actions
- Indications
- Contraindications
- Dosing/Routes
- How supplied
- Precautions
- Side effects



Class:

- Narcotic/Opiote Antagonist
- Onset IV/IN: 1-2 min
- Onset IM: 2-10 min
- Half life: 30-81 min

Actions:



- Narcotic antagonist
- Reverse effects of opiate drugs, narcotics/synthetic narcotics: (examples)
- Morphine, Dilaudid, Fentanyl, Demerol, Paregoric, Methadone, Heroin, Percodan, Tylox, Nubain, Stadol, Talwin, Darvon

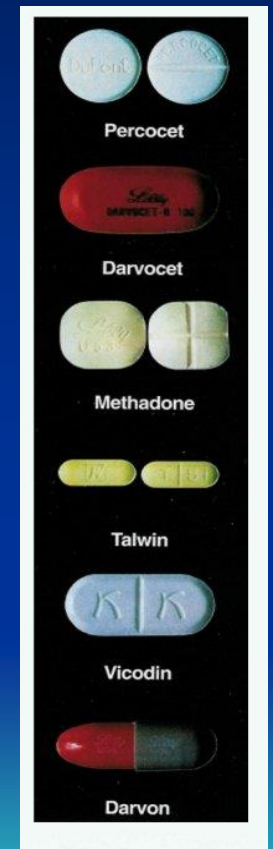
Indications:

- Narcotics and Synthetic Narcotic OD's
- Coma of unknown etiology with respiratory depression and/or constricted pupils



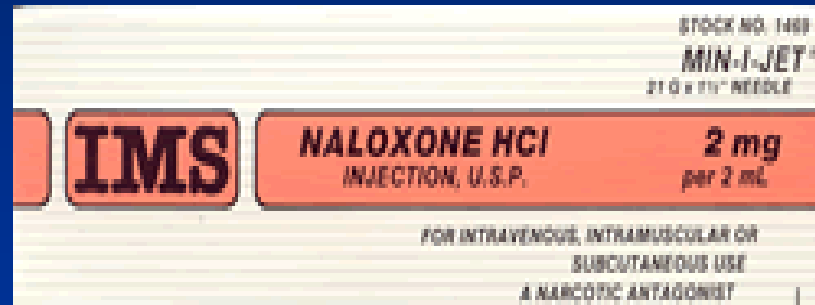
Dosing/Routes:

- Adults: 1 mg IVP/IN/IO/IM. Repeat q 30 sec until breathing resumes/improves up to 4 mg.
- Additional doses require OLMC
- Peds: 0.1 mg/kg IVP/IN/IO/IM up to 1 mg single dose. Repeat q 30 sec until breathing resumes/improves up to 4 mg.



How supplied:

- 2 mg in 2 ml



Contraindications:

- Hypersensitivity



Precautions:

- Use with caution patients dependent on narcotics or to infants of addicted mothers as it may cause opiate withdrawal syndrome.
- Give O₂ while prepping med to prevent reversal tachycardia.
- Rapid reversal of opiate in patients who took combination drugs including stimulants may result in rapid tachycardia's.



Side effects/adverse reactions:

- Combativeness
- ↑ HR, ↑ B/P
- Vent, arrhythmias, asystole or seizures (opioid antagonists stimulate the sympathetic NS)
- GI: N/V
- Rare anaphylactic reactions have been reported after Narcan use

- Ref: MWLCEMS Protocol and 2000 Mosby's Nursing Drug Reference Book



Case Study

- You have been called to a 19 year old female patient who is comatose and has taken a unknown substance. She has constricted pupils and is breathing shallow. What is the initial dose of Narcan.



Answer

- Adults: Adults: 1 mg IVP/IN/IO/IM. Repeat q 30 sec until breathing resumes/improves up to 4 mg.

Question?

- Half way to the Hospital she starts to become less responsive once again and respiratory status is once again decreasing. You would?



Answer

- Call OLMC to request additional doses.