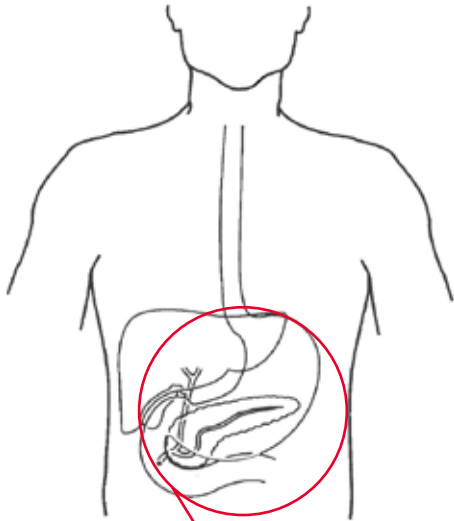
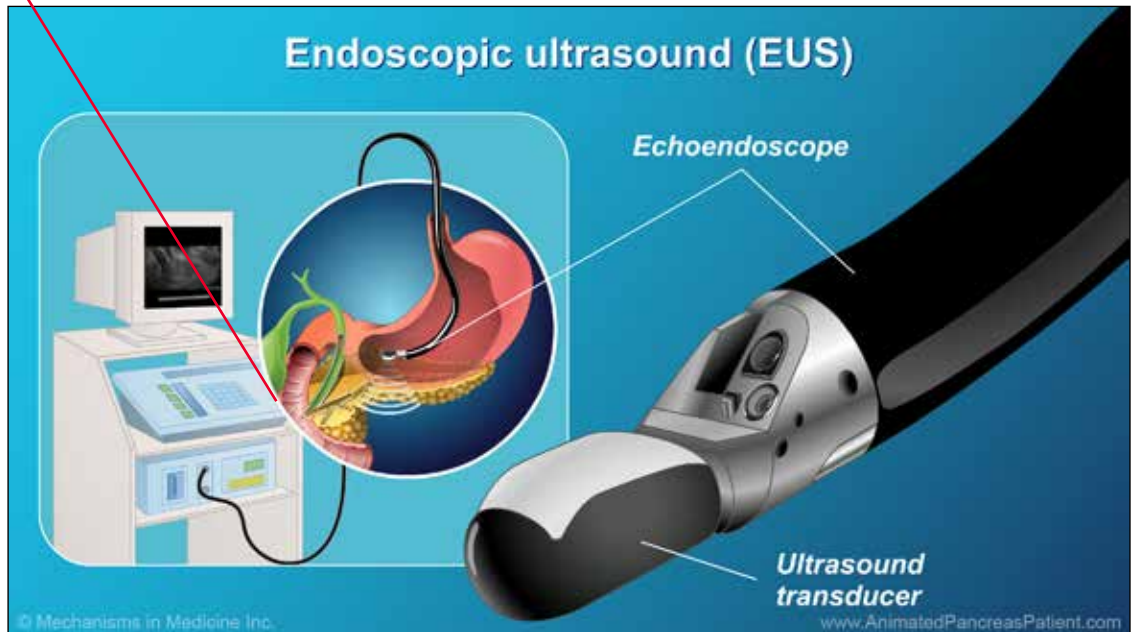


## Endoscopic Ultrasound (EUS)



EUS is a procedure used to view the inside of your gastrointestinal (GI) tract. This includes the esophagus, stomach, pancreas, liver and rectum. EUS may also help find and treat problems.



Used with permission from The National Pancreas Foundation and Mechanisms in Medicine Inc.  
©Mechanisms in Medicine Inc. All rights reserved.  
Learn more at [www.AnimatedPancreasPatient.com](http://www.AnimatedPancreasPatient.com)

*Para asistencia en español, por favor llamar al Departamento de Representantes para Pacientes al 312.926.3112.*

The entities that come together as Northwestern Medicine are committed to representing the communities we serve, fostering a culture of inclusion, delivering culturally competent care, providing access to treatment and programs in a nondiscriminatory manner and eliminating healthcare disparities. For questions, please call either Northwestern Memorial Hospital's Patient Representatives Department at 312.926.3112, TDD/TTY 312.926.6363 or the Northwestern Medical Group Patient Representatives Department at 312.695.1100, TDD/TTY 312.926.6363.

Developed by: NMH Digestive Health Clinic (Interventional Gastroenterology)